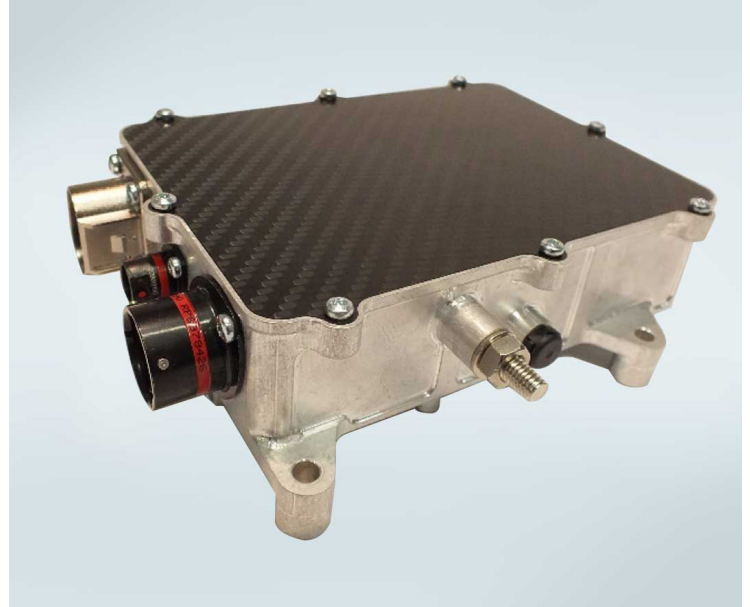


0.8kW DCDC CONVERTER



Zytek's latest DCDC converter is a small and light weight, liquid cooled unit offering exceptional efficiency for electric and hybrid racing applications. To achieve the maximum efficiency with minimal cooling, a phase-shifted full-bridge DCDC topology has been employed. It is compliant with FIA Safety Regulations. A 48V output and different power levels are also available on request.

SPECIFICATION

Type:	Step-Down DCDC Converter 2.5kV isolation HV-LV
Dimensions:	153 x 113 x 45 mm*
Mass:	0.74 kg
Input Voltage:	500V to 900V DC
Output Voltage:	15VDC
Peak Output Current:	70A
Power Level:	0.8 kW (Continuous)**
Efficiency:	Peak >97%
Cooling:	Water***
Control:	CAN Current Limit Voltage Setpoint Active Discharge Request
Environmental Sealing:	IP67
HVIL (High Voltage Interlock Loop)	
Active Discharge	

SUITABLE FOR

Formula E Season 5 onwards
LMP1 Hybrid
Formula 1
HEV/EV Race Applications

CONNECTOR INFORMATION

LV Output Connector: ASHD0-14-1PN

Pin	Signal
A	LV Positive

LV Signal Connector: ASDD006-09-PN

Pin	Signal
1	LV Supply
2	Ground
3	CAN High
4	CAN Low
5	Enable
6	Not Used
7	Not Used
8	HVIL +
9	HVIL -

HV Input Connector: PL082X-61-2.5

Pin	Signal
1	HV Negative
2	HV Positive

*HVIL in connector housing

**excluding connectors

***continuous power output at 65°C coolant temperature

***optional monitoring of pressure drop across unit