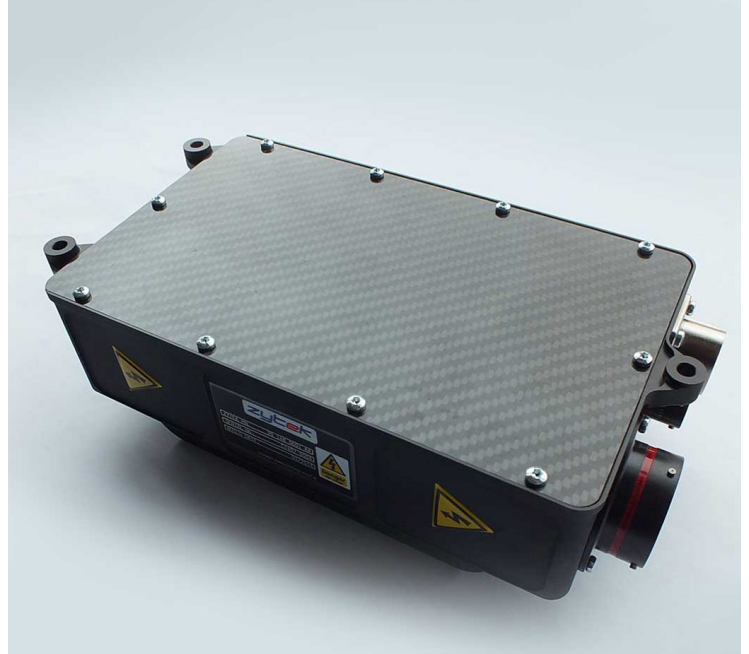


## 1.2kW DCDC CONVERTER



Zytek's latest DCDC converter is a small and light weight unit offering exceptional efficiency for electric and hybrid racing applications. To achieve high efficiency with passive cooling, a phase-shifted full-bridge DCDC topology has been employed. It is compliant with FIA Safety Regulations. A 48V output and different power level are also available on request.

### SPECIFICATION

Type:	Step-Down DCDC Converter
Dimensions:	235 x 125 x 70 mm
Mass:	1.16 kg
Input Voltage:	500V to 900V DC
Output Voltage:	15VDC
Peak Output Current:	85A
Power Level:	1.2 kW (Continuous)
Efficiency:	Typically 92-96%
Cooling:	Naturally cooled
Control:	CAN Current Limit Voltage Setpoint Active Discharge Request
Environmental Sealing:	IP67
HVIL (High Voltage Interlock Loop)	
Active Discharge	

### SUITABLE FOR

Formula E Season 5 - 7  
LMP1 Hybrid  
HEV/EV Race Applications

### CONNECTOR INFORMATION

LV Connectors: ASHD0-22-24320SN

Pin	Signal
A	No connection
B	LV Power GND
C	No connection
D	No connection
E	LV Positive

Signal Connector: 8STA00835SN

Pin	Signal
1	DCDC Enable
2	CAN High
3	Wake Up
4	HVIL +
5	HVIL -
6	CAN Low

HV Connector: PL082X-61-2.5

Pin	Signal
1	HV GND
2	HV Positive

\*HVIL in connector housing